

Efforts of Integrated Drought Management Programme in the Horn of Africa (IDMP HoA)

**Gerald Kairu
Regional Project Manager
IDMP HoA**

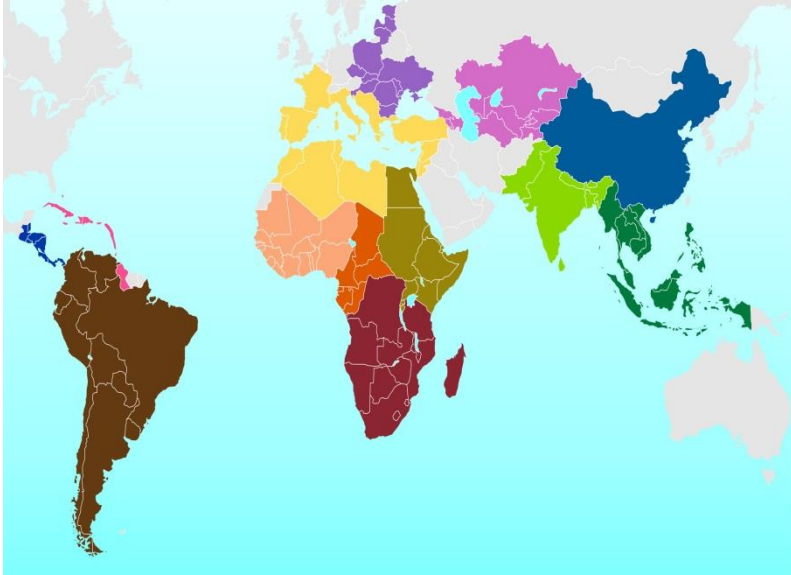
The Horn of Africa Region

TARGET COUNTRIES

- Djibouti
- Eritrea
- Ethiopia
- Kenya
- Somalia
- South Sudan
- Sudan
- Uganda



About GWP



IDMP HOA is Part of the global IDMP that GWP & WMO launched in Geneva March 2013 at the High-level Meeting on National Drought Policy (HMNDP).

IDMP HOA GOAL

To promote increased drought resilience of countries, communities and ecosystems in the HOA region.

THE CHALLENGE

The Horn of Africa has experienced adverse weather effects (frequent and severe floods and droughts) for a long time- causing substantial economic losses and humanitarian suffering

> 2,900 Partners in 174 countries:

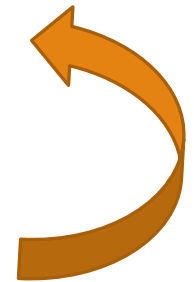
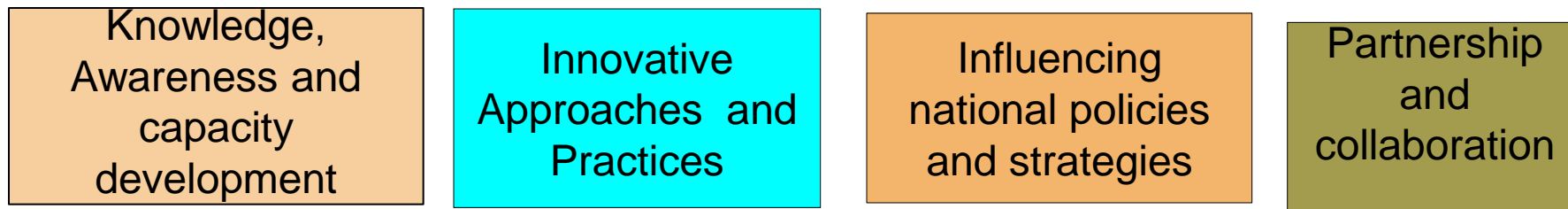
- 13 Regional Water Partnerships
- 84 Country Water Partnerships

Secretariat, Stockholm: ± 30

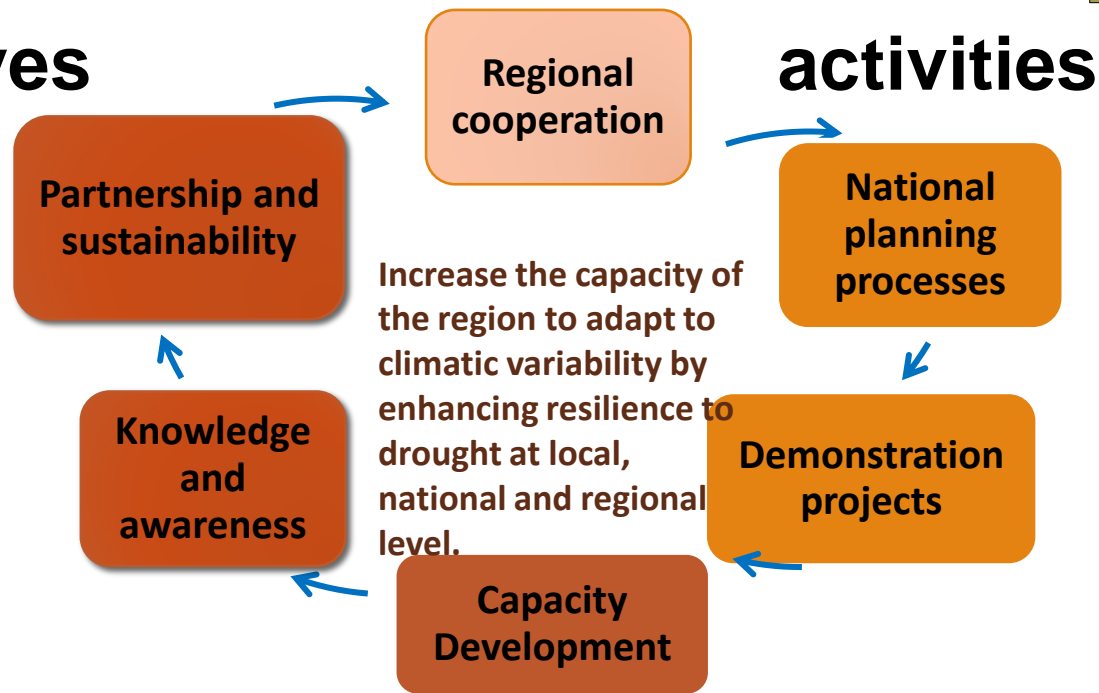
Technical Committee: up to 12

IDMP HOA Components & Expected Outputs

Integrated Drought Management at the Regional and National Level



Objectives



Contribution of IDMP to the HOA Region



- There are many ongoing efforts in drought management in the region
- Apply the principles of integrated water resource and risk management, involving the GWP network at the country level and thus, providing the fertile ground for other initiatives to take off
- IDMP HOA is a facility in partnership with other drought initiatives in the region to support countries practically with the help of Country Water Partnerships
- Support action and implementation on the ground, adding to existing efforts strength of IDMP and its partners
- IDMP HOA will help countries in the follow up of this workshop i.e in the practical development and implementation of national drought policies
- IDMP is a resource countries can tap into for technical support

Regional Actors

- IGAD/IDDRSI/INWRMP**- advocate and facilitate integration of responses by various agencies from various sectors such as water, land, agriculture, ecosystems, energy and sharing best practices at regional levels
 - ICPAC**- IGAD Climate Prediction and Application Centre
 - WMO regional offices**- engaged in monitoring and providing early warning of drought
 - NBI- Nile Basin Initiative**- engage governments in the region
- Etc....

Key Messages



- The HOA experiences adverse weather effects (i.e. severe floods and droughts) that need collective effort through partnerships and collaboration in drought management to tackle using an integrated management approach
- Inadequate technical capacity in drought management in the region is a key hindrance and therefore capacity is required at all levels i.e. policy and decision makers, researchers, civil society and communities to effectively handle the drought challenges.

Thank You

www.gwp.org

gkairu@nilebasin.org